

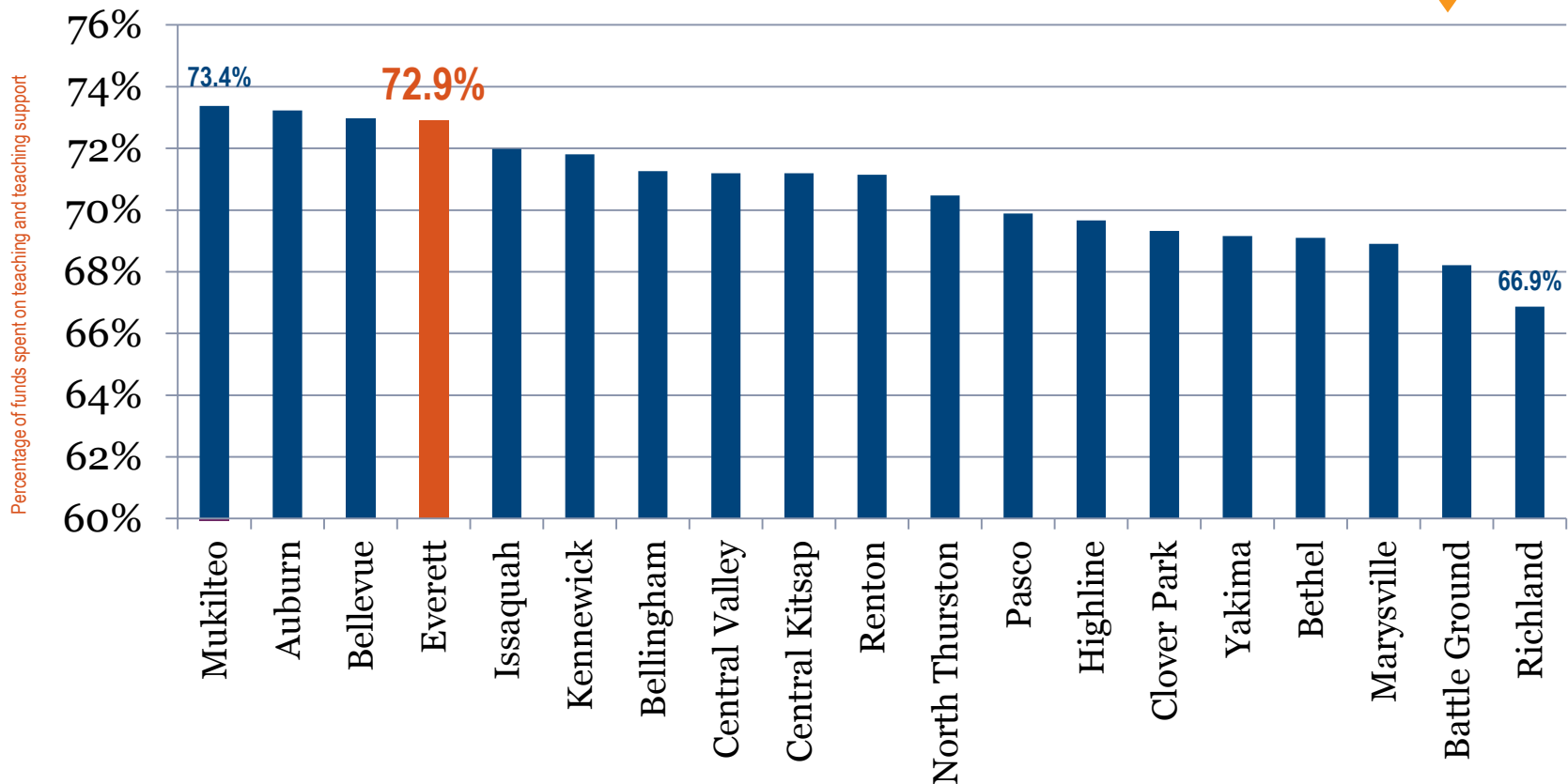
Large district comparison

Districts with enrollments between 10,000 – 19,999

Total teaching: 2014-15 *(includes teaching support)*

Teachers, para educators, supplies, coaches, activity advisors, librarians, counseling, student security, recess supervision, psychologists, speech, and health services

Statewide
average
69.8%



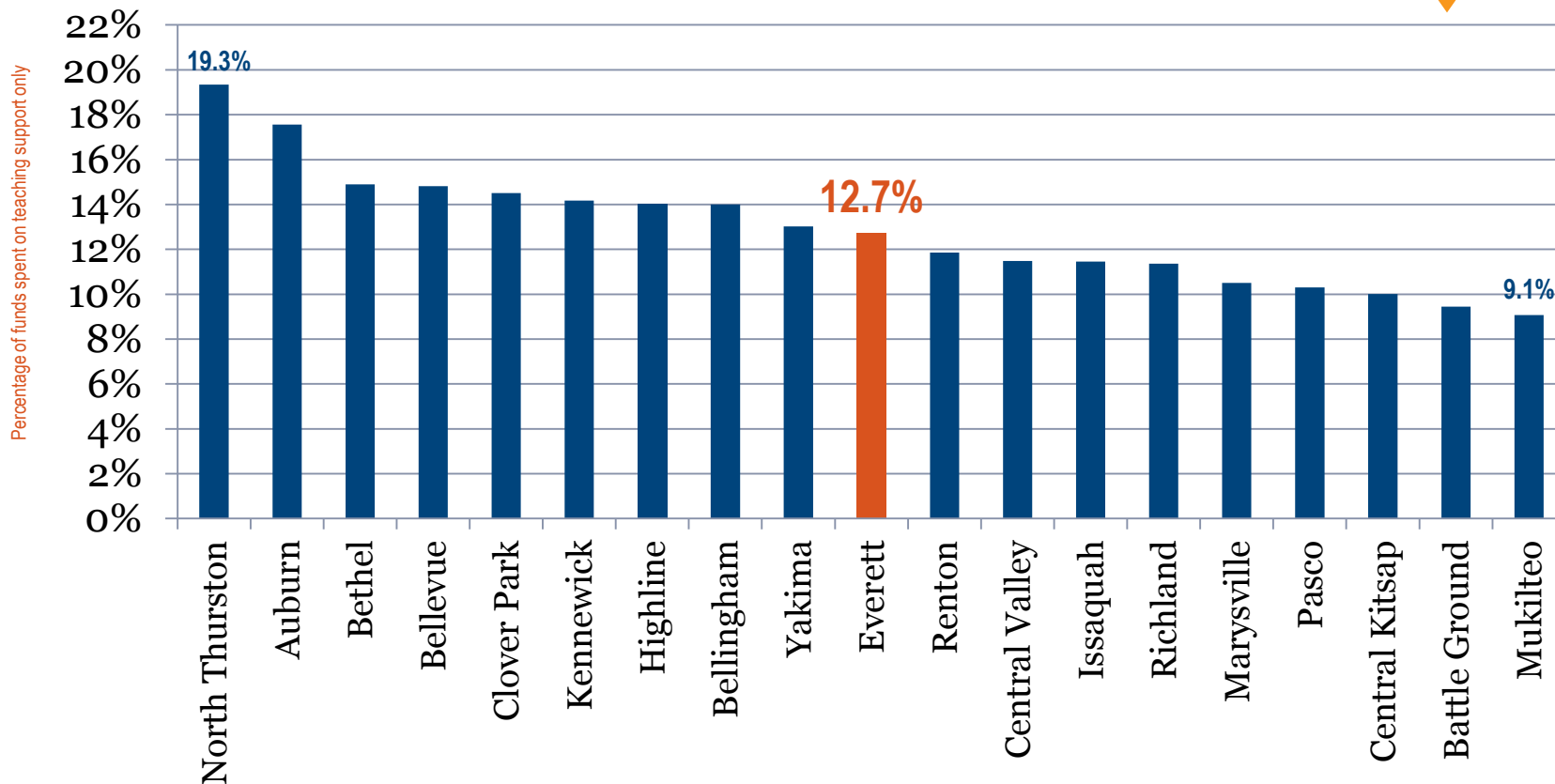
Large district comparison

Districts with enrollments between 10,000 – 19,999

Teaching support only: 2014-15

Librarians, counseling, student security, recess supervision, psychologists, speech, and health services

Statewide
average
12.2%



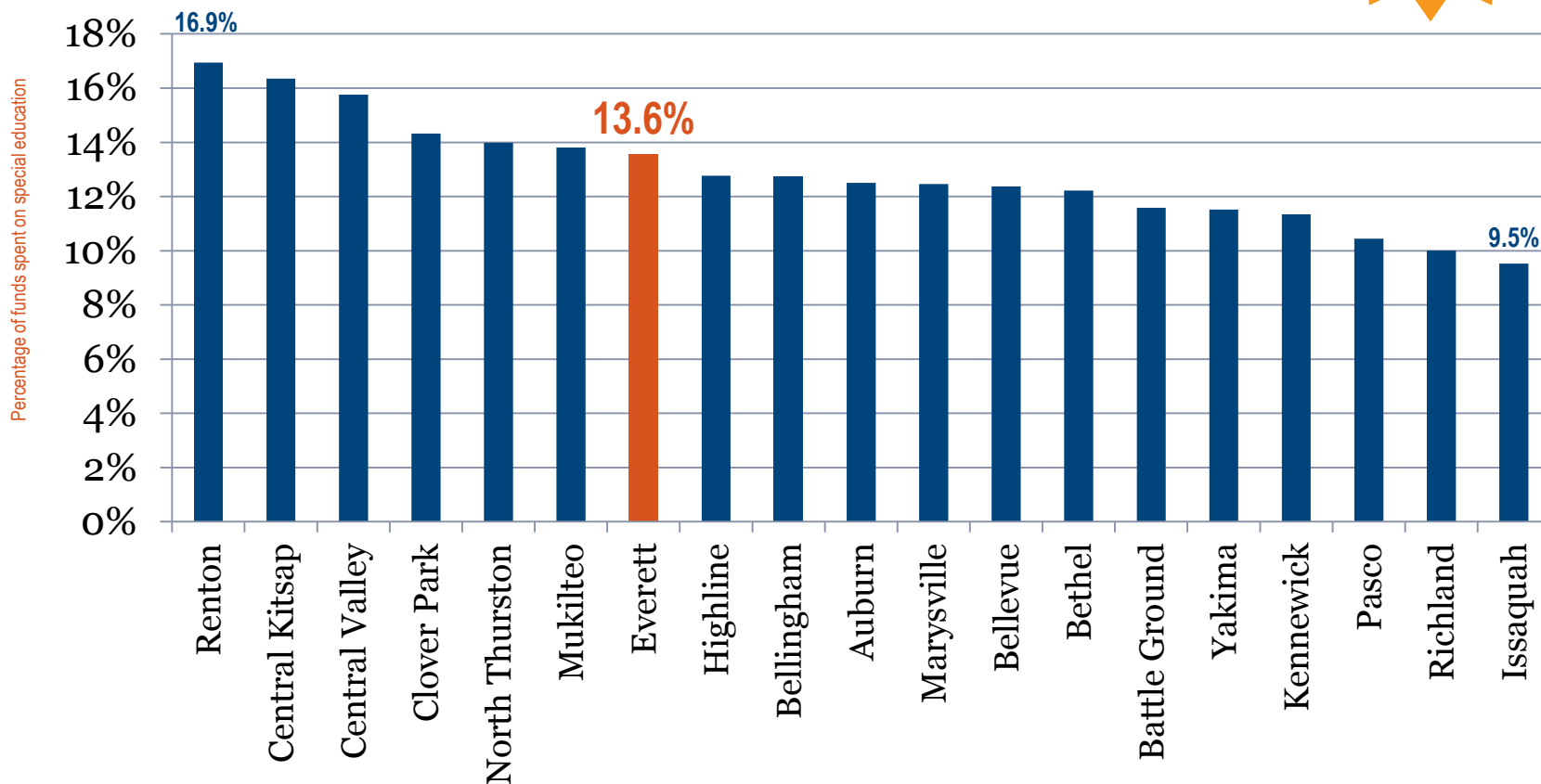
Large district comparison

Districts with enrollments between 10,000 – 19,999

Special education: 2014-15

Staffing including teachers, para educators, psychologists, nurses, speech and language pathologists, occupational and physical therapists, administrative staff, services, equipment, and materials

Statewide
average
12.5%



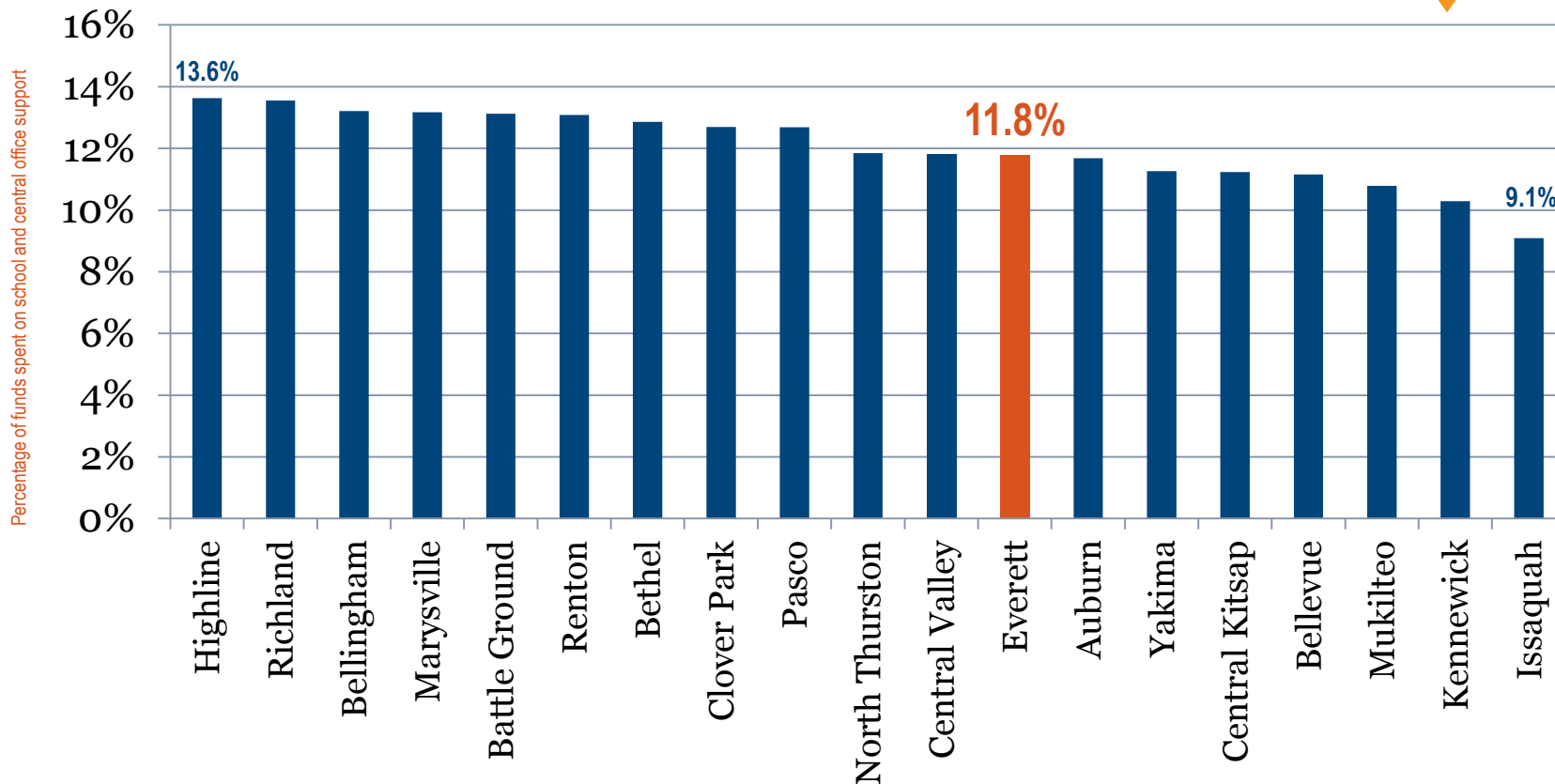
Large district comparison

Districts with enrollments between 10,000 – 19,999

Total administration: 2014-15

School and district administrators, technical and clerical staff, and their supplies and materials

Statewide
average
12.6%



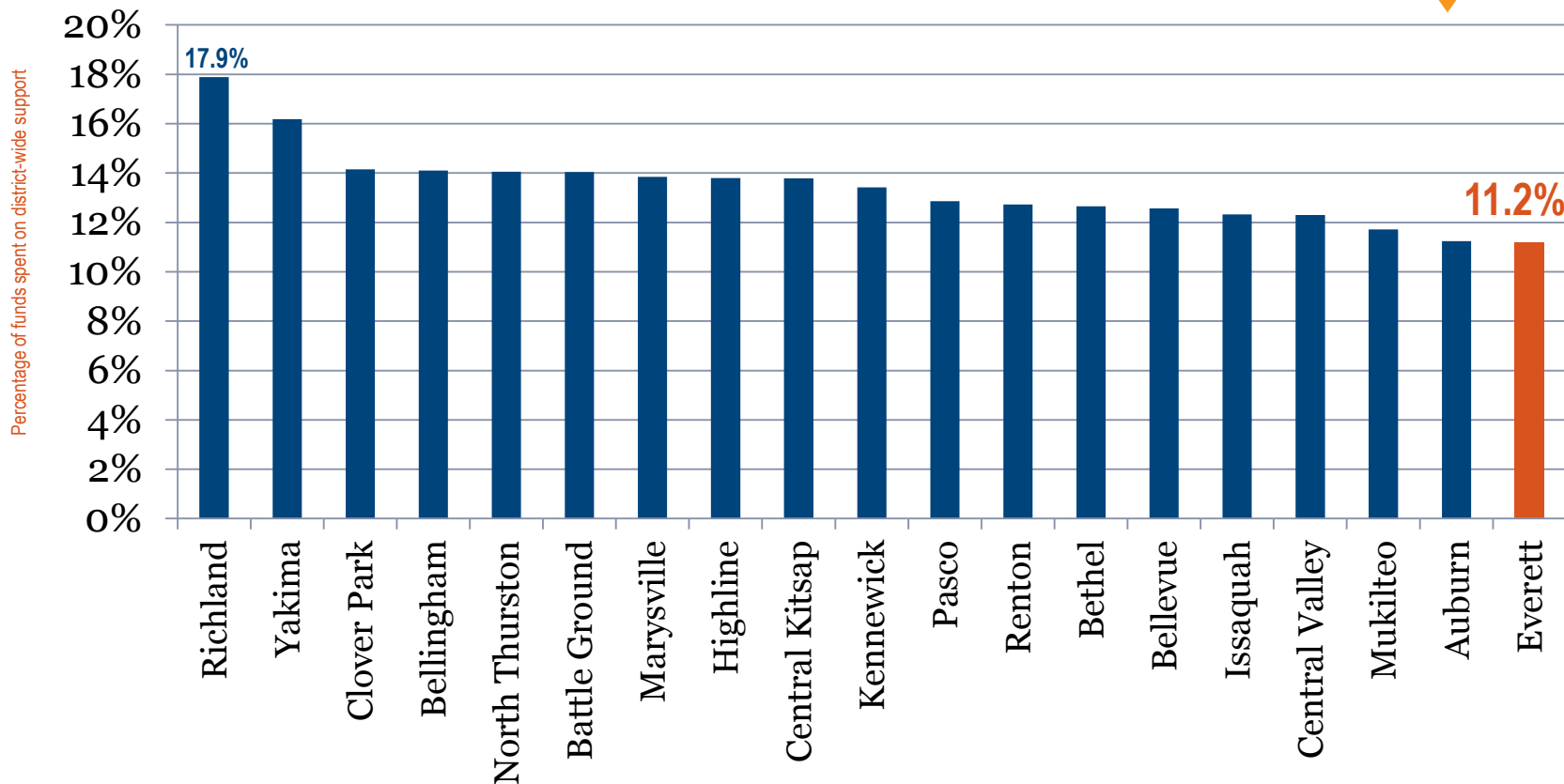
Large district comparison

Districts with enrollments between 10,000 – 19,999

District-wide support: 2014-15

School board, superintendent, human resources, finance, information systems, communications, and maintenance

Statewide
average
14.3%



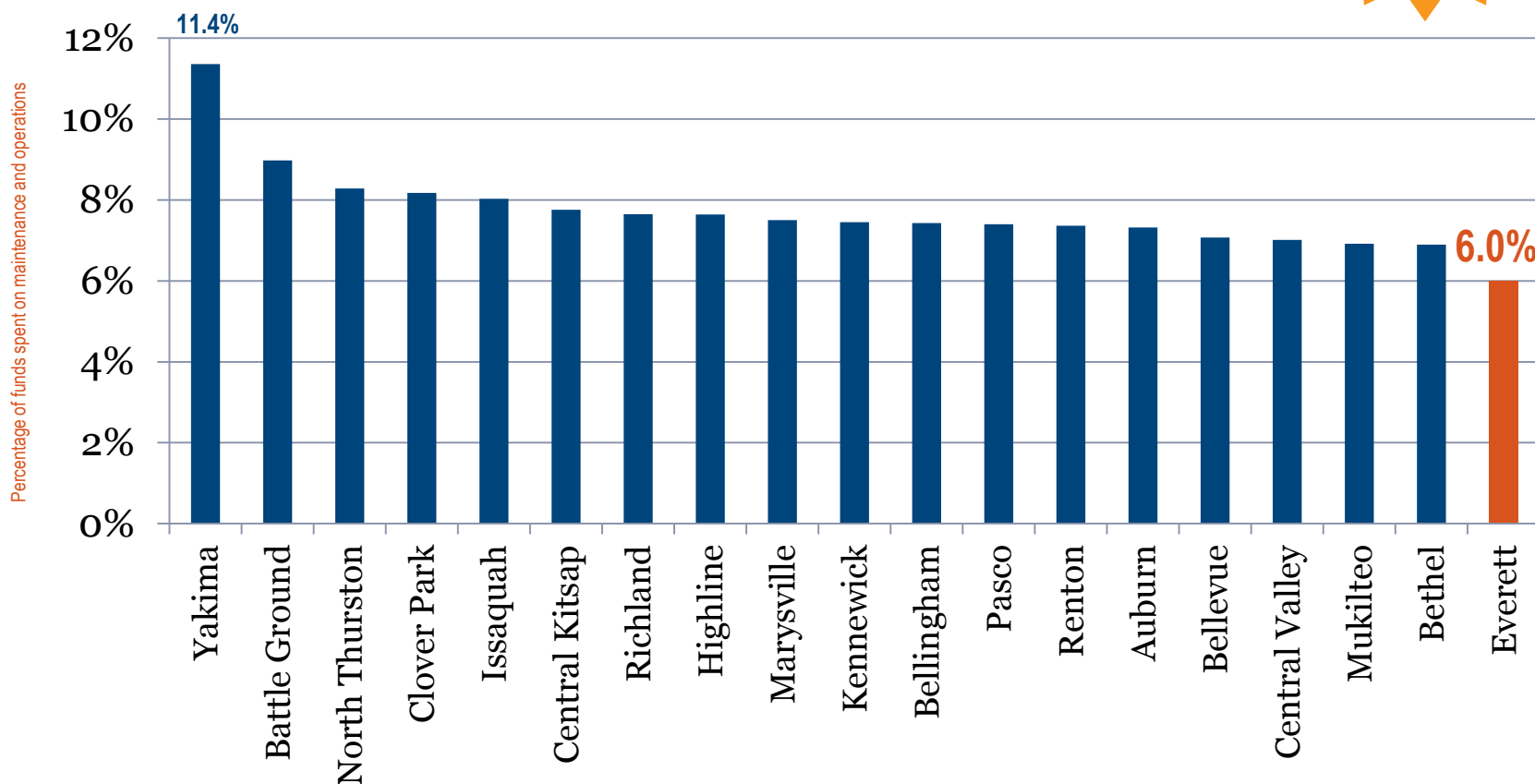
Large district comparison

Districts with enrollments between 10,000 – 19,999

Maintenance and operations: 2014-15

Maintenance of schools and grounds, school custodians, utilities, and school security

Statewide
average
8.2%



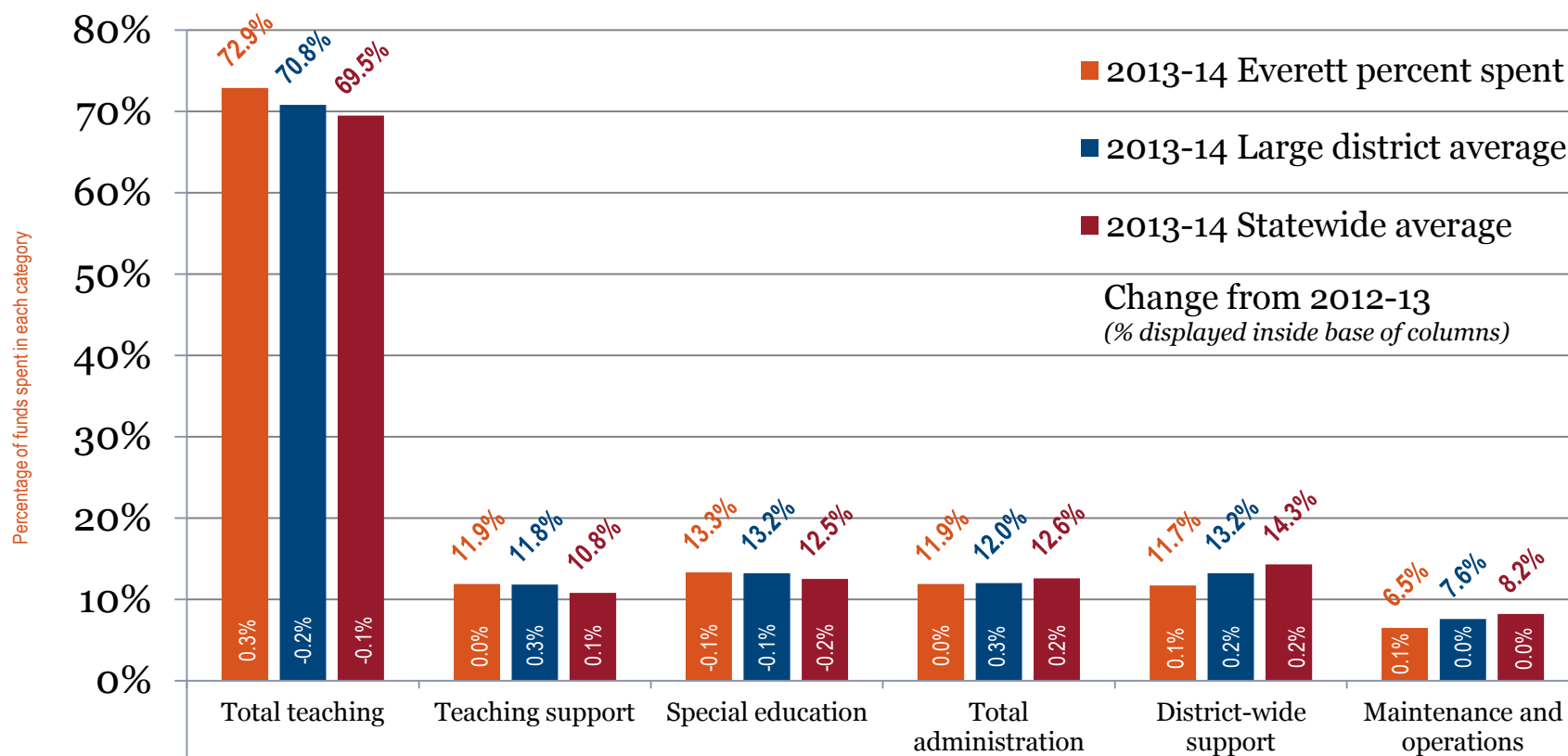
Source: OSPI website <http://www.k12.wa.us/safs/PUB/FIN/14/15/fs.asp>

Large district comparison

Districts with enrollments between 10,000 – 19,999

Summary of comparisons: 2013-14

Teaching, teaching support, special education, total administration, district-wide support, maintenance and operations



Large district comparison

Districts with enrollments between 10,000 – 19,999

Summary of comparisons: 2013-14

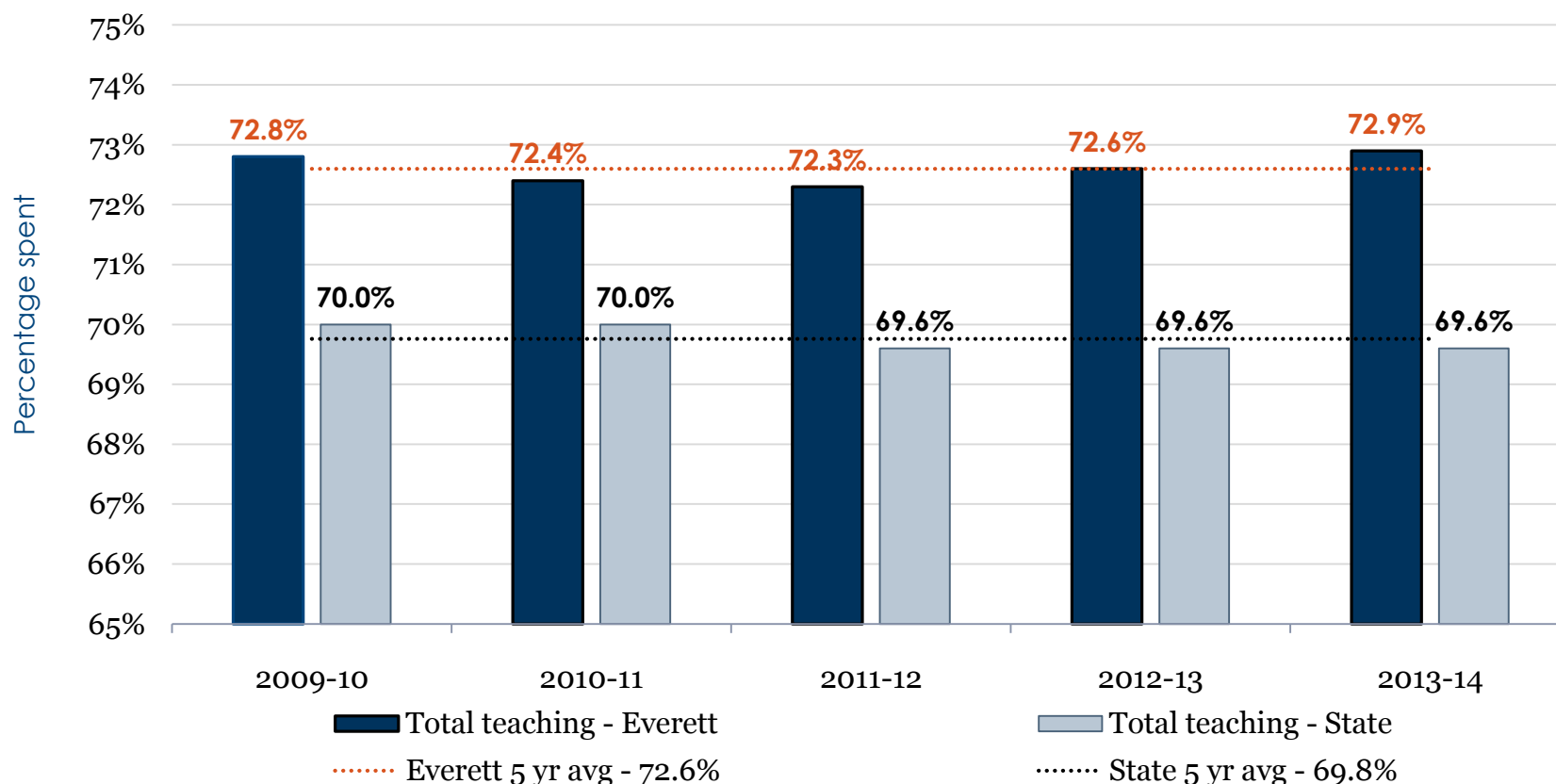
What do these comparisons say about Everett Public Schools spending?

Spending Category	What is included in this category	% of general fund spent in Everett	Avg % spent by similarly sized districts	What this says about Everett Public Schools spending
Total teaching (includes teaching support)	Teachers, paraeducators, supplies, coaches, activity advisors, librarians, counseling, student security, recess supervision, psychologists, speech, and health services	72.9%	70.8%	Everett Public Schools spends more on teaching and teaching support than 18 of the state's 21 school districts of comparable size
Teaching support	Librarians, counseling, student security, recess supervision, psychologists, speech and health services	11.9%	11.8%	Everett spends a larger percentage on teaching support than 14 of the state's 21 comparably sized school districts
Special education	Staffing including teachers, para educators, psychologists, nurses, speech and language pathologists, occupational and physical therapists, administrative staff, services, equipment, and materials	13.3%	13.2%	Everett's special education spending is slightly more than the average of all the state's 21 comparably sized school districts
Total administration	School and district administrators, technical and clerical staff, their supplies and materials	11.9%	12.0%	Everett spends less on total administration than 10 of the 21 comparably sized districts
District-wide support	School board, superintendent, human resources, finance, information systems, communications, maintenance	11.7%	13.2%	Everett spends less on district-wide support than all other comparably sized districts but one
Maintenance and operations	Maintenance of schools and other district facilities and grounds, custodians, utilities and school security	6.5%	7.6%	Everett spends less in this category than all other comparably sized districts

State-wide comparison

Five year summary: Total teaching 2010 to 2014

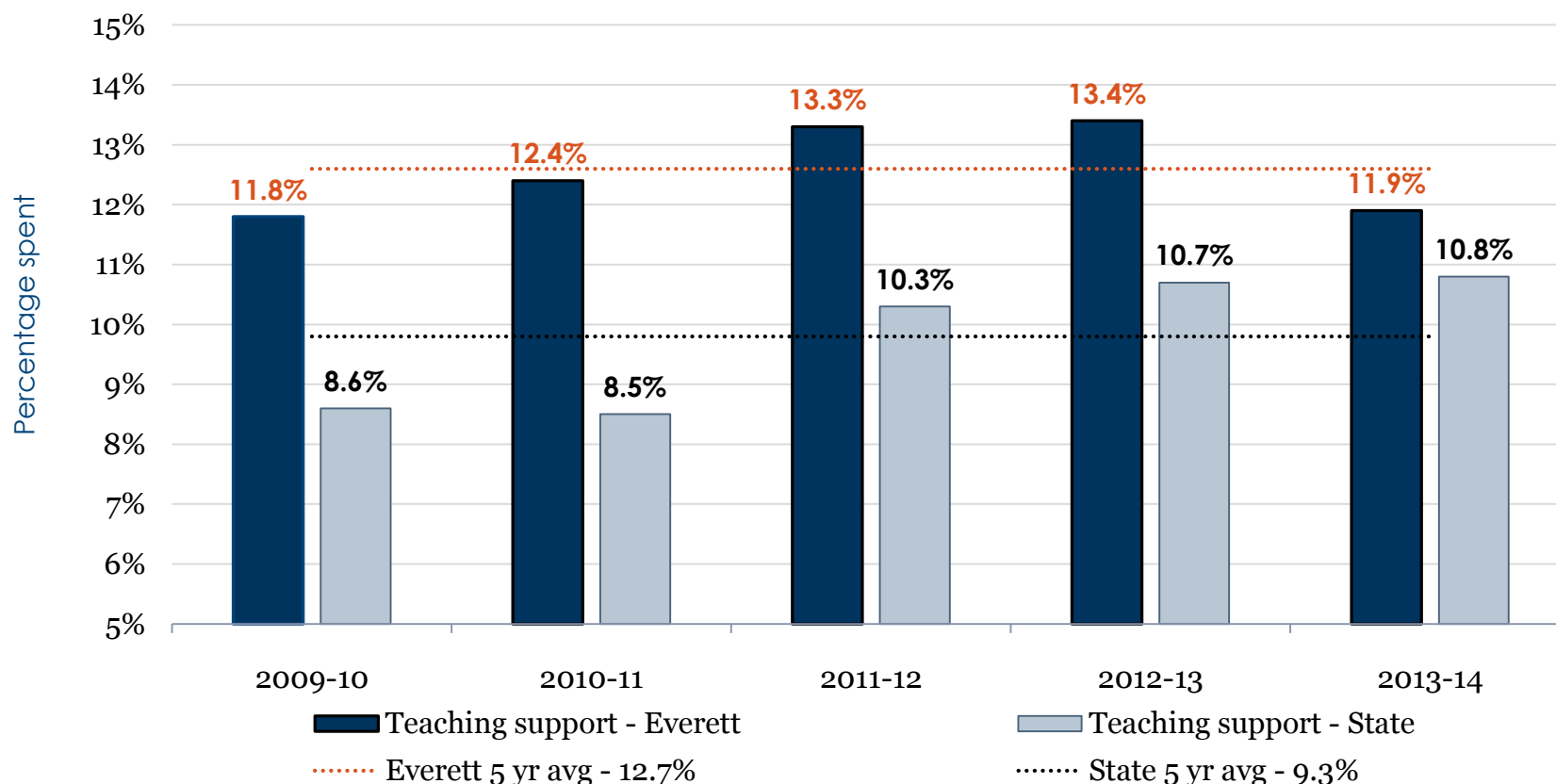
Teaching, teaching support, special education, total administration, district-wide support, maintenance and operations



State-wide comparison

Five year summary: Teaching support 2010 to 2014

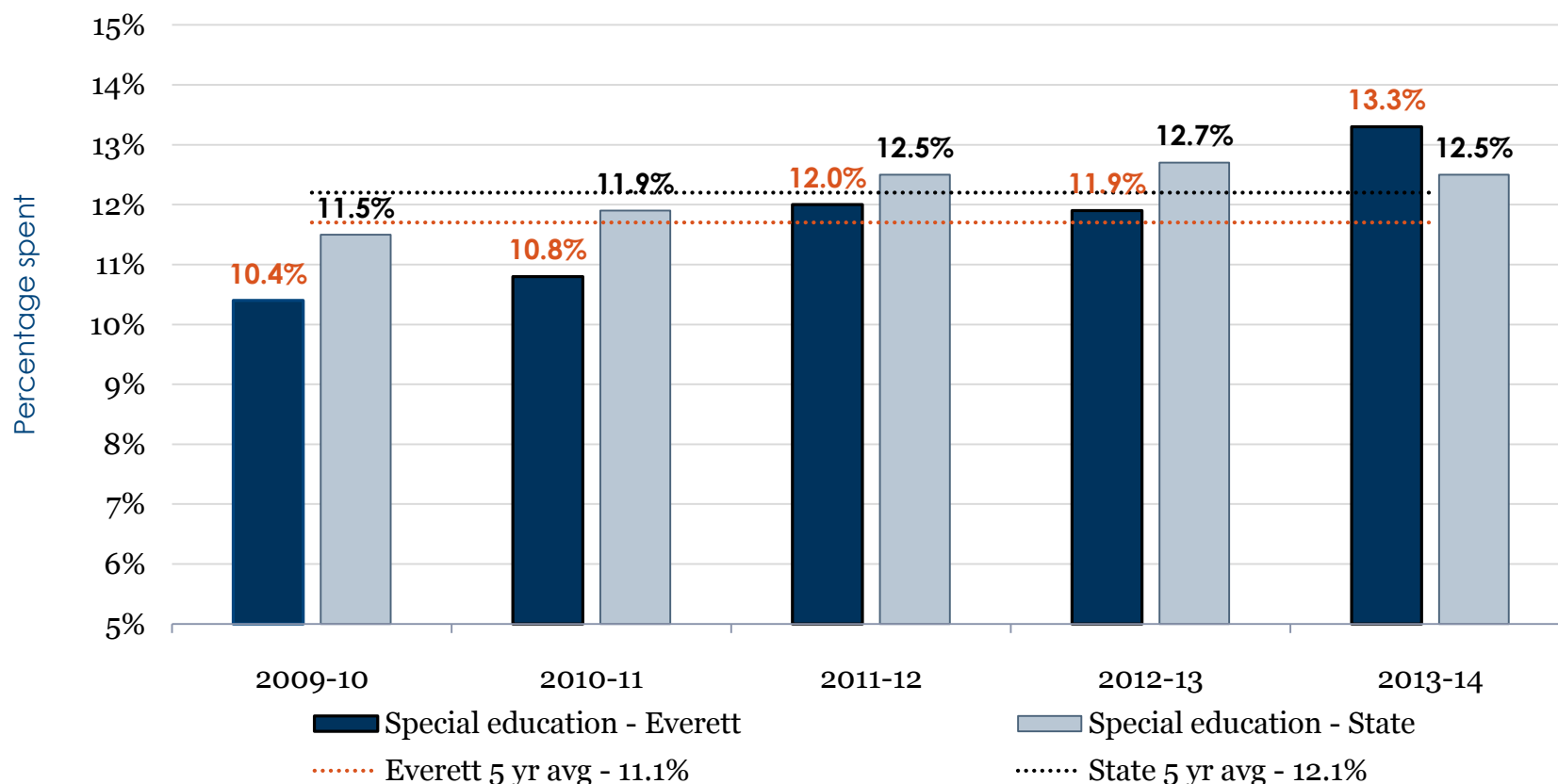
Librarians, counseling, student security, recess supervision, psychologists, speech, and health services



State-wide comparison

Five year summary: Special education 2010 to 2014

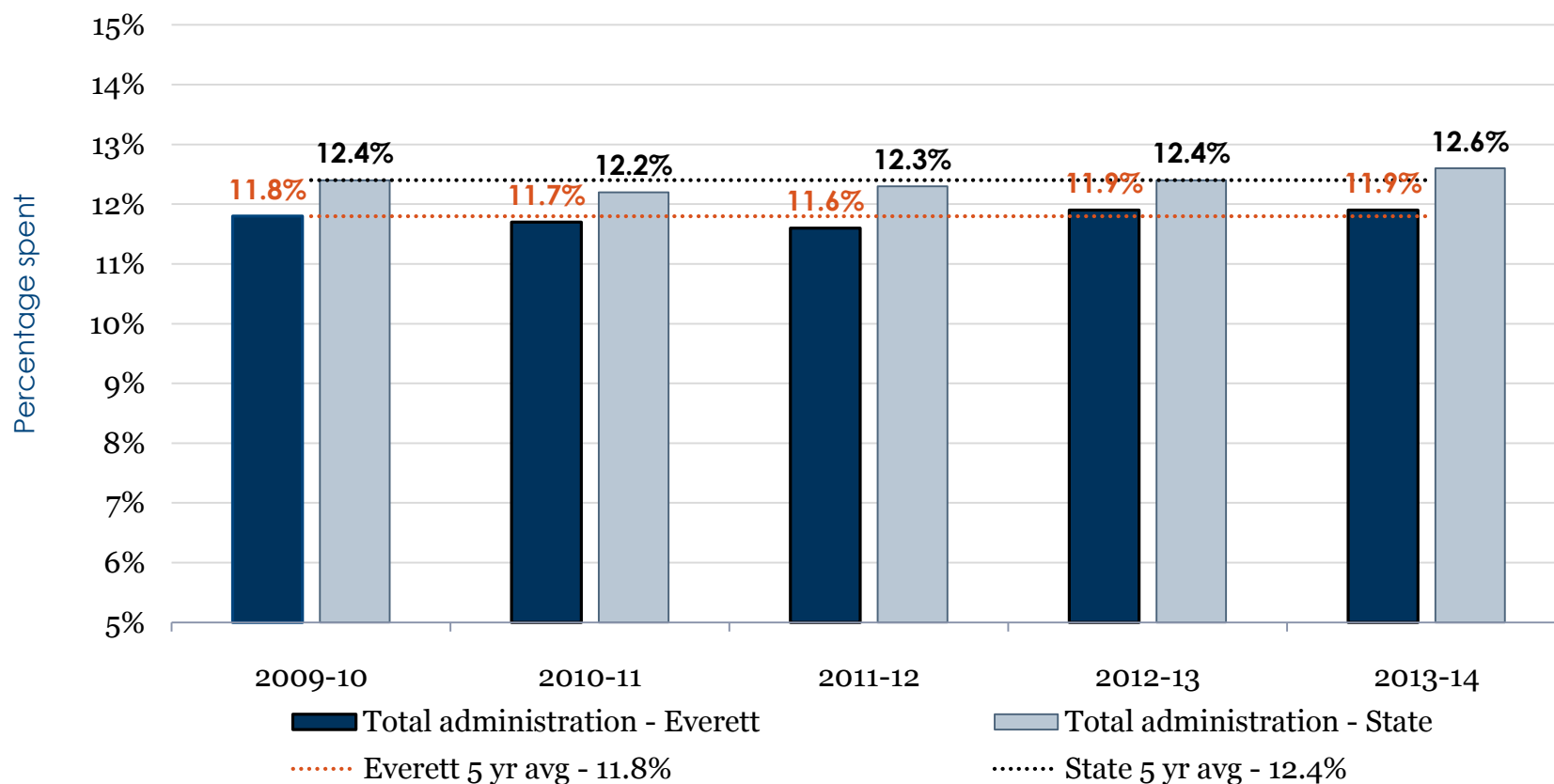
Staffing including teachers, para educators, psychologists, nurses, speech and language pathologists, occupational and physical therapists, administrative staff, services, equipment, and materials



State-wide comparison

Five year summary: Total administration 2010 to 2014

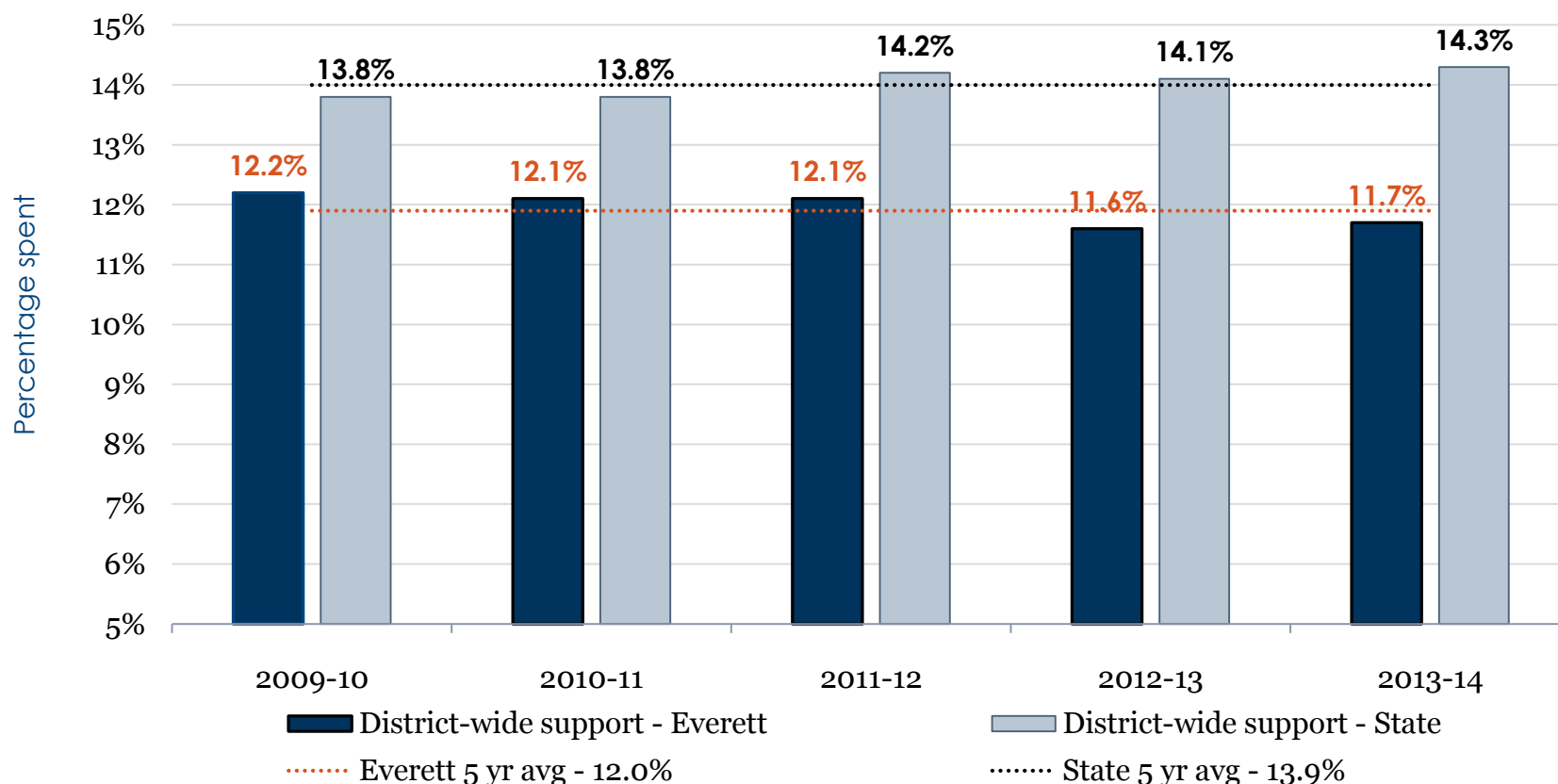
School and district administrators, technical and clerical staff, and their supplies and materials



State-wide comparison

Five year summary: District-wide support 2010 to 2014

School board, superintendent, human resources, finance, information systems, communications, and maintenance



State-wide comparison

Five year summary: Maintenance & operations 2010 to 2014

Maintenance of schools and grounds, school custodians, utilities, and school security

